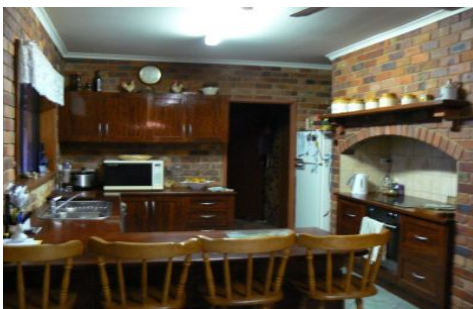


LUKE GOGGIN REAL ESTATE



858 Derby Serpentine BRIDGEWATER VIC

4  2  2 

Situated approximately 30 minutes from Bendigo is this very neat and tidy 4 bedroom brick home. Features of this home include built in robes to all bedrooms, open fire place in lounge and dining room. The home also includes dishwasher, walk in pantry, 2 bathrooms, one having spa and double shower. Double garage, bore water, granny flat and school bus that stops at front gate.

View : <https://www.goggin.com.au/lease/vic/greater-bendigo-region/bridgewater/residential/house/5724117>